

AiM Infotech

Plug&Play kit
MXL Strada/Pista/Pro/Pro05
for Subaru Impreza
1999-2012

Release 1.04





INDEX

INDEX	1
PRE-REQUISITES	2
INTRODUCTION	3
1 – Standard kit, optional and part numbers	4
1.1 – MXL Strada basic kit	5
1.2 – MXL Strada complete kit	5
1.3 – MXL Pista basic kit	6
1.4 – MXL Pista complete kit	6
1.5 – MXL Strada/Pista universal kit (if you already have an MXL Strada/Pista)	7
1.6 – MXL Pro/Pro05 universal kit (if you already have an MXL Pro/Pro05)	7
1.7 – Upgrading kit (if you already have a basic kit and want to upgrade to complete)	7
1.8 – Optional	8
2 – Kit installation	9
2.1 – Installation of MXL Strada/Pista kit	9
2.2 – Installation of MXL Pro/Pro05 kit	11
3 – Configuration with Race Studio 2	13
3.1 – Configuration of MXL Strada/Pista	14
3.2 – Configuration of MXL Pro/Pro05	19
4 – Gear calibration	24
5 – Sampled Channels	25
5.1 – Channels sampled by MXL with 1999-2007 protocol	25
5.2 – Channels sampled by MXL with 2008-2011 protocol	26
6 – Data download	27



PRE-REQUISITES

This kit supports Subaru Impreza vehicles from 1999 up to 2012.

MXL Strada/Pista/Pro/Pro05 can only be configured in a Windows™ environment under Microsoft Windows 7™, Vista™ and XP™ operative systems.

Please refer to Race Studio Configuration user manual – freely downloadable from area download software section of www.aim-sportline.com – to know how to install software and drivers and to MXL user manual for further information concerning MXL working mode.



INTRODUCTION

MXL Plug&Play kit for Subaru Impreza is a dash – with data logging feature in Pista version – designed for a quick and easy installation. With a minimum effort you can connect it to the car engine control unit or ECU (from here onward ECU) and visualize, with no need of additional sensors installation and according to the car model:

- RPM
- speed
- throttle position
- engine temperature
- turbo compressor pressure
- right bank injection advance
- left bank injection advance
- ignition advance
- detonation sensor correction
- fuel level
- neutral sensor
- disengaged clutch signal
- brake starting sensor
- engine load
- air flow

Please note: sampled channels can change according to the car registration year and all analog additional channels are disabled in MXL Strada/Pista versions as explained in paragraph 3.1.

Thanks to the infrared receiver and transmitter – included in MXL Pista kits and optional to MXL Strada ones – you can visualize and, with MXL Pista/Pro/Pro05, record lap times.

1

Standard kit, optional and part numbers



MXL Plug&Play kit for Subaru Impreza is available in different versions, each including only some of the items shown here above. Refer to the numbers to know which items are included in each kit.

Please note: before installing the kit check that it includes all specified items.



1.1 MXL Strada basic kit

MXL Strada basic kit (part number X16MXLSKBS) includes:

- MXL Strada (1)
- MXL Strada basic wiring(2)
- Subaru interface wiring (3)
- USB cable for PC connection (4)
- Race Studio 2 software installation CD (5)
- MXL Subaru Plug&Play kit user manual (6)
- AiM sticker (7)

Please note: MXL Strada basic kit gets ECU channels only.

1.2 MXL Strada complete kit

MXL Strada complete kit (part number X16MXLSKCS) includes:

- MXL Strada (1)
- MXL Strada complete wiring (8)
- Subaru interface wiring (3)
- USB cable for PC connection (4)
- Race Studio 2 software installation CD (5)
- MXL Subaru Plug&Play kit user manual (6)
- AiM sticker (7)

Please note: MXL Strada complete kit can support additional analog channels. See paragraph 3.1 for further information.

1.3

MXL Pista basic kit

MXL Pista basic kit (part number X16MXLCKBS) includes:

- MXL Pista (1)
- MXL Pista basic wiring (2)
- Subaru interface wiring (3)
- infrared lap receiver (9) and transmitter (10)
- lap transmitter power cable (11)
- USB cable for PC connection (4)
- Race Studio 2 software installation CD (5)
- MXL Subaru Plug&Play kit user manual(6)
- AiM sticker (7)

Please note: MXL Pista basic kit gets ECU channels only.

1.4

MXL Pista complete kit

MXL Pista complete kit (part number X16MXLCKCS) includes:

- MXL Pista (1)
- MXL Pista complete wiring (8)
- Subaru interface wiring (3)
- infrared lap receiver (9) and transmitter (10)
- transmitter power cable (11)
- USB cable for PC connection (4)
- Race Studio 2 software installation CD (5)
- MXL Subaru Plug&Play kit user manual (6)
- AiM sticker (7)

Please note: MXL Pista complete kit supports additional analog channels. See paragraph 3.1 for further information.



1.5

MXL Strada/Pista universal kit (if you already have an MXL Strada/Pista)

MXL Strada/Pista universal kit for Subaru (part number V02554530) is dedicated to those customers that already have an MXL Strada/Pista. It includes:

- universal MXL Strada/Pista interface wiring for Subaru (3)
- Race Studio 2 software installation CD (5)

1.6

MXL Pro/Pro05 universal kit (if you already have an MXL Pro/Pro05)

MXL Pro/Pro05 universal kit for Subaru (part number V02554600) is dedicated to those customers that already have an MXL Pro/Pro05. It includes:

- universal MXL Pro/Pro05 interface wiring for Subaru
- Race Studio 2 software installation kit

1.7

Upgrading kit (if you already have a basic kit and want to upgrade to complete)

Upgrading kit (part number V02554520) is dedicated to those customers that already have a Subaru basic kit and want to upgrade it to complete. It includes:

- MXL Strada/Pista complete wiring for Subaru (8)
- Race Studio 2 software installation CD (5)



1.8 Optional

Optional items are only available for MXL Strada kits and are:

- infrared lap receiver (9) – part number: X41RX19090
- infrared lap transmitter (10) – part number: X02TXKMA01
- lap receiver power cable (11) – part number: V02POWTX0

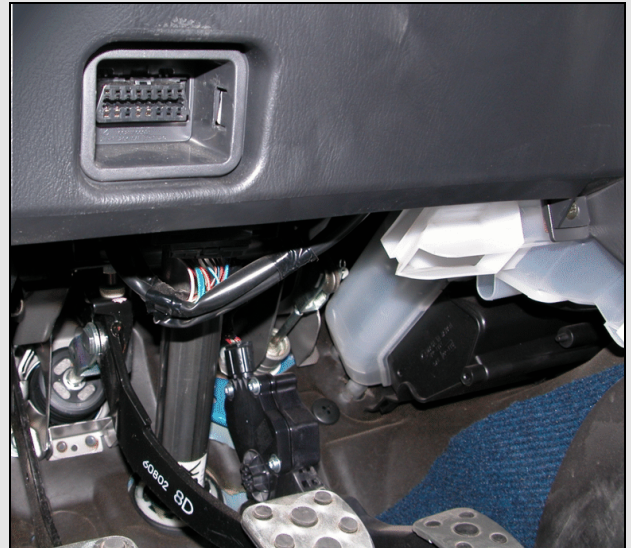
2 Installation kit

MXL Plug&Play kit for Subaru Impreza guarantees the maximum ease of installation.

2.1 MXL Strada/Pista kit installation

MXL Strada/Pista is not internally powered. This is why you have to connect Subaru interface wiring free cables to a +12 volt power source connected to the ignition key switch so that your MXL switches on/off with the vehicle.

MXL connection with the ECU is made through the OBDII diagnosis plug placed under the steering wheel column as pointed out here below on the left. The image on the right shows the OBDII plug where the dedicated connector of Subaru interface wiring is to be plugged in.



The image here below shows the Subaru interface wiring connector plugged in the OBDII plug.



Now the system is powered and connected to the vehicle. It is only necessary to make MXL receive data from the ECU: connect the female plastic connector of the interface cable to to:

- the male plastic connector of MXL basic cable if you bought a basic kit;
- the male plastic connector labelled RS232 of the complete wiring if you bought a complete kit.

It is now necessary to firmly fix MXL on the vehicle dashboard. Use the four rear anchor plugs of MXL shown here below.



Here below two possible MXL installations are shown.



If you bought a complete kit you have a complete wiring and you can connect other sensors, optical lap receiver included. Please refer to MXL user manual, freely downloadable from area download, documentation section of www.aim-sportline.com, to know how to connect all sensors.

2.2

MXL Pro/Pro05 kit installation

MXL Pro/Pro05 is not internally powered and takes its power from Subaru interface board. Connect the plastic connector of Subaru interface cable to any free channel of MXL Pro/Pro05. Channels available for this purpose are:

MXL Pro:

- Speed 1 – 2
- Channel 5 – 6 – 7

MXL Pro05:

- Speed 1 – 2 – 3 – 4
- Channels 8 – 9 – 10 – 11

MXL connection with the ECU is made through the OBDII diagnosis plug placed under the steering wheel column as pointed out here below on the left. The image on the right shows the OBDII plug where the dedicated connector of Subaru interface wiring is to be plugged in.



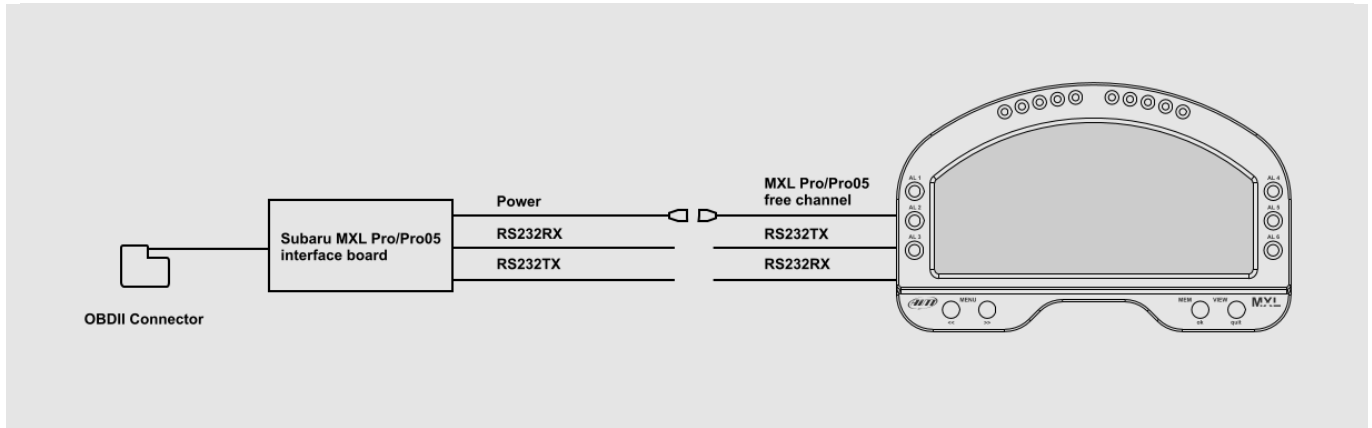
The image here below shows the Subaru interface wiring connector plugged in the OBDII plug.



Now the system is powered and connected to the vehicle. It is only necessary to make MXL receive data from the ECU: connect the free cables of the interface cable as follows:

- cable labelled RS232TX of Subaru interface wiring to cable labelled RS232RX of MXL Pro/Pro05 wiring;
- cable labelled RS232RX of Subaru interface wiring to cable labelled RS232TX of MXL Pro/Pro05 wiring;

Here below is the connection scheme.



For further information about MXL Pro/Pro05 pinout refer to MXL user manual freely downloadable from area download documentation of www.aim-sportline.com.

3

Configuration with Race Studio 2

When the device has been installed and connected you have to configure it using Race Studio 2 software, included in the kit. Please perform this procedure with MXL switched on and connected to the PC.

For further information about software and driver installation refer to Race Studio Configuration user manual freely downloadable from area download software section of www.aim-sportline.com.

3.1 Configuration of MXL Strada/Pista

Run Race Studio 2 software and follow this path:

- press “Device configuration –> MXL” on the software left keyboard;
- MXL configuration page opens on “Select configuration” layer;
- press “New” and “New configuration panel”, shown here below, appears;
- fill in configuration and vehicle name;
- select data logger type choosing between: MXL Strada Subaru 99-11 e MXL Pista Subaru 99-11¹.

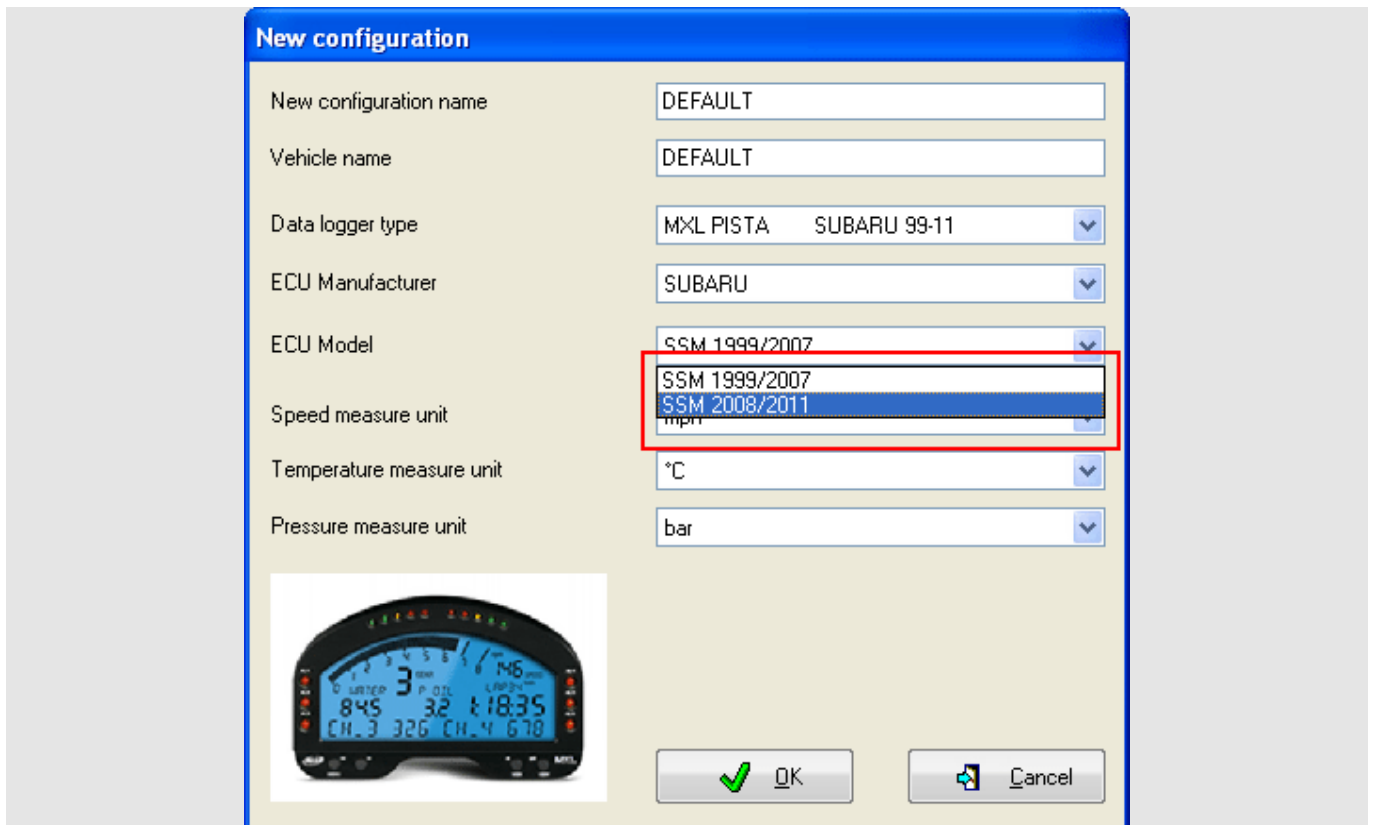
The screenshot shows the 'System manager' window with the 'New configuration' dialog box open. The dialog box contains the following fields and options:

- New configuration name: DEFAULT
- Vehicle name: DEFAULT
- Data logger type: MXL PISTA
- ECU Manufacturer: (dropdown menu)
- ECU Model: (list of models including SUZUKI GSXR K3 - K5, SUZUKI GSXR 600, SUZUKI GSXR 750, SUZUKI GSXR 1000, SUZUKI GSXR 600 2008, SUZUKI GSXR 750 2008, SUZUKI GSXR 1000 2007-2008, SUZUKI GSXR K3 - K5 (harr), SUZUKI GSXR 600 2006-2008, SUZUKI GSXR 750 2006-2008, SUZUKI GSXR 1000 2005-2008, SUZUKI GSXR 1000 2007-2008, SUZUKI GSXR K3 - K5 (harr), SUZUKI GSXR 600 2006-2008, SUZUKI GSXR 750 2006-2008, SUZUKI GSXR 1000 2005-2008, SUZUKI GSXR 600 2008, SUZUKI GSXR 750 2008, SUZUKI GSXR 1000 2007-2008, SUZUKI GSXR 1000 2007-2008, GSXR YOSHIMURA, GSXR YOSHIMURA, YOSHIMURA ZERO-50, YAMAHA-R1-04-09, YAMAHA-R6-04-05, YAMAHA-R6-06-07-08, YAMAHA-R1-04-09, YAMAHA-R6-04-05, YAMAHA-R6-06-07-08, YAMAHA-TMAX, YAMAHA-TMAX, KAWASAKI ZX6R_ZX10R, KAWASAKI ZX6R_ZX10R)
- Speed measure unit: (dropdown menu)
- Temperature measure unit: (dropdown menu)
- Pressure measure unit: (dropdown menu)

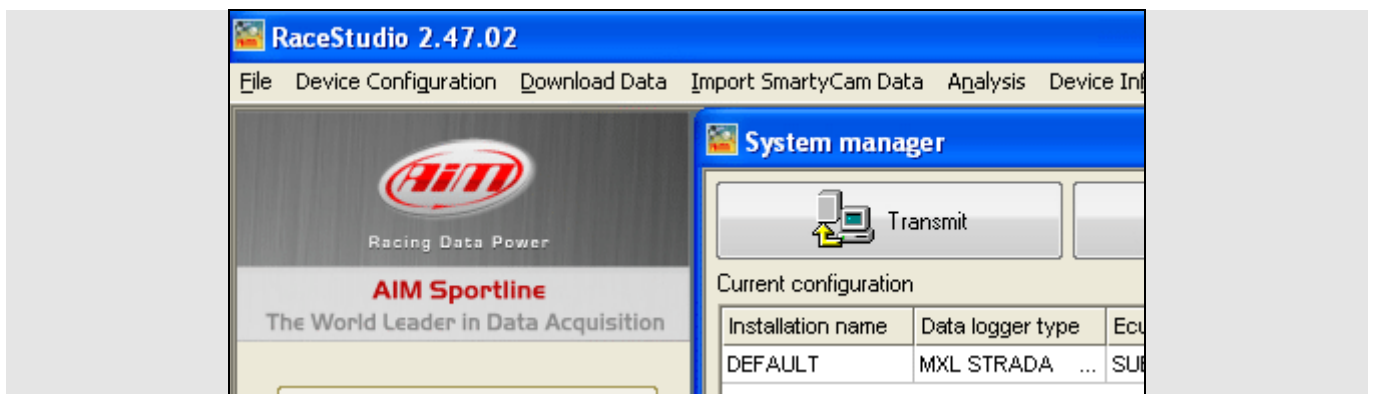
The 'Data logger type' dropdown menu is currently set to 'MXL PISTA'. The 'ECU Model' list includes 'MXL PISTA SUBARU 99-11' and 'MXL STRADA SUBARU 99-11', which are highlighted in red. A red arrow points from the 'New' button in the background to the dialog box. An inset image of a motorcycle instrument cluster is also shown.

¹Both data logger types fit a 2012 Subaru Impreza too.

- “ECU Manufacturer” sets automatically on “SUBARU”;
- select “ECU Model” according to your vehicle registration year as shown here below²;



- set speed, temperature and pressures measure units;
- press “OK” and the configuration has been created;
- now press “Transmit”: the configuration will be transmitted to MXL.



²Both data logger types fit a 2012 Subaru Impreza too.

Please note: as anticipated, Plug&Play kit has no additional sensors so all MXL analog channels as well as Speed_1 are disabled by default. This can be verified activating "Channels" layer shown here below.

These channels would activate only if physically adding some sensors, connecting and configuring them.

System manager

Transmit Receive

Current configuration

Installation name	Data logger type	Ecu	Lap Timer
DEFAULT	MXL STRADA SUBAR...	SUBARU - SSM ...	Optical

Select configuration Channels System configuration CAN-Expansions configur

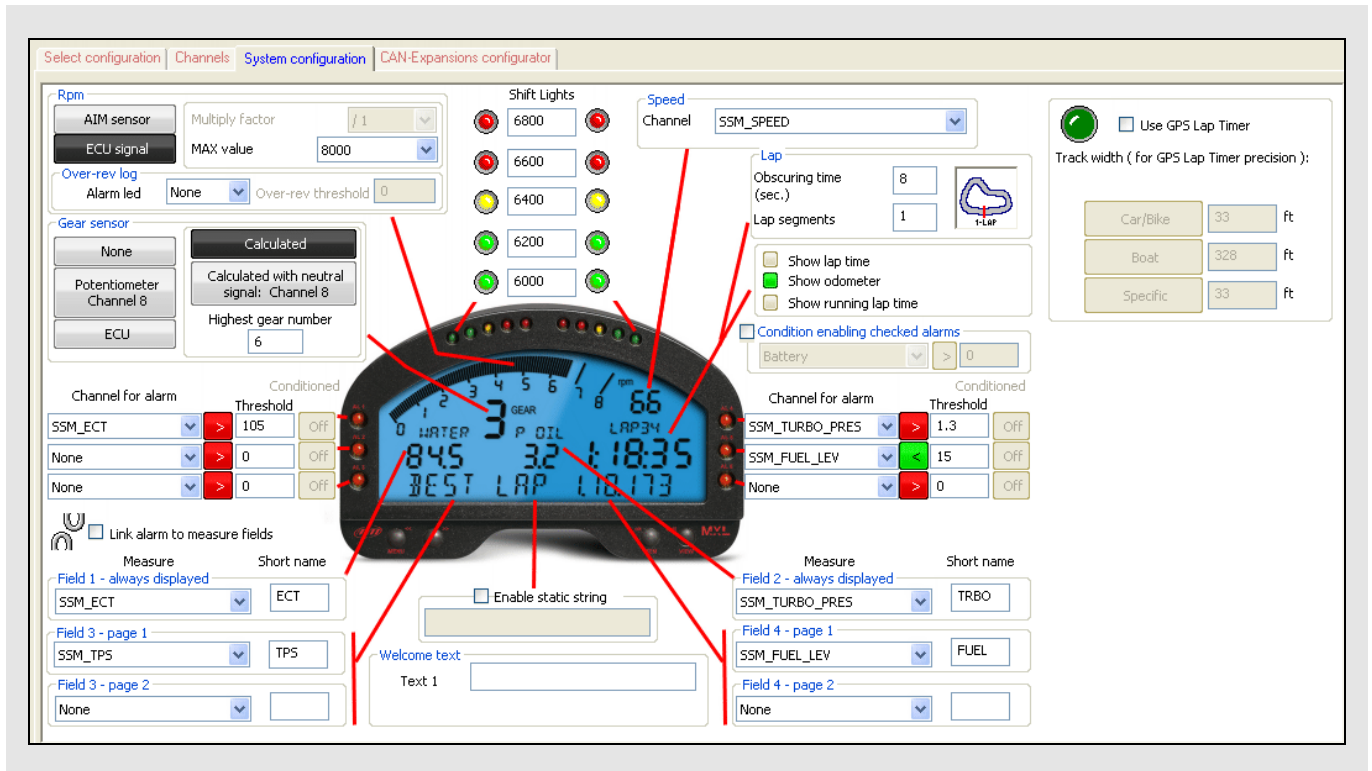
Speed_1

Wheel circumference inch 65.59

Pulses per wheel revolution 1

Channel ident...	Enabled/disabled	Channel name
RPM	<input type="checkbox"/> Disabled	Engine
SPD_1	<input type="checkbox"/> Disabled	Speed_1
CH_1	<input type="checkbox"/> Disabled	Channel_1
CH_2	<input type="checkbox"/> Disabled	Channel_2
CH_3	<input type="checkbox"/> Disabled	Channel_3
CH_4	<input type="checkbox"/> Disabled	Channel_4
CH_5	<input type="checkbox"/> Disabled	Channel_5
CH_6	<input type="checkbox"/> Disabled	Channel_6
CH_7	<input type="checkbox"/> Disabled	Channel_7
CH_8	<input type="checkbox"/> Disabled	Channel_8
CALC_GEAR	<input checked="" type="checkbox"/> Enabled	Calculated_Gear
ACC_1	<input checked="" type="checkbox"/> Enabled	LatAcc

Your MXL display is already configured and the image here below shows the default values.



Set channels of the default configuration are:

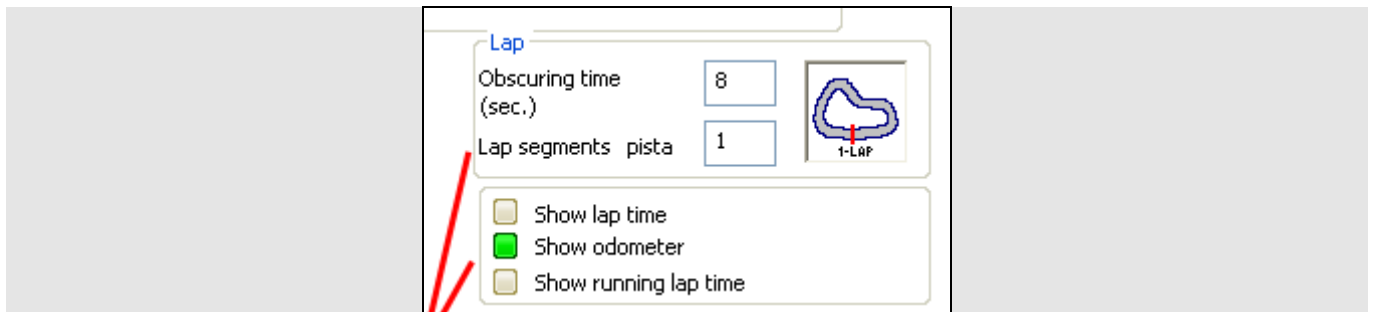
- RPM: set on ECU with Max value 8.000 RPM;
- Gear sensor: set on "Calculated"; it needs to be calibrated as explained in chapter 4;
- Shift lights: set expecting a speed limiter at 6900 RPM. If your engine has a limiter set on higher values modify these values so that they switch on shortly before the limiter intervention. Here follow limiter value of some Subaru models.
 - STI spec C 2000 cc 280cv limiter is set at 7.900 RPM;
 - STI 2000 cc 265 cv limiter is set at 7.500 RPM.

Alarm thresholds set for these channels ("Channel for alarm") are:

- ECT (water temperature): threshold value at 105°C
- TURBO PRESS (over charging pressure): threshold fixed at 1.3 bar;
- FUEL_LEV (fuel level): threshold value set at 15% of the left fuel.

Channels visualized by MXL display (“Measure” fields) are:

- ECT (water temperature);
- TURBO PRESS (over charging pressure);
- TPS (throttle opening percentage)
- FUEL_LEV (fuel level);
- ODOMETER: when you are on track, if you have connected an optical receiver and placed the transmitter, when MXL detects a lap signal switches to “Show lap time” mode as shown here below. To come back to odometer visualization switch off/on MXL.



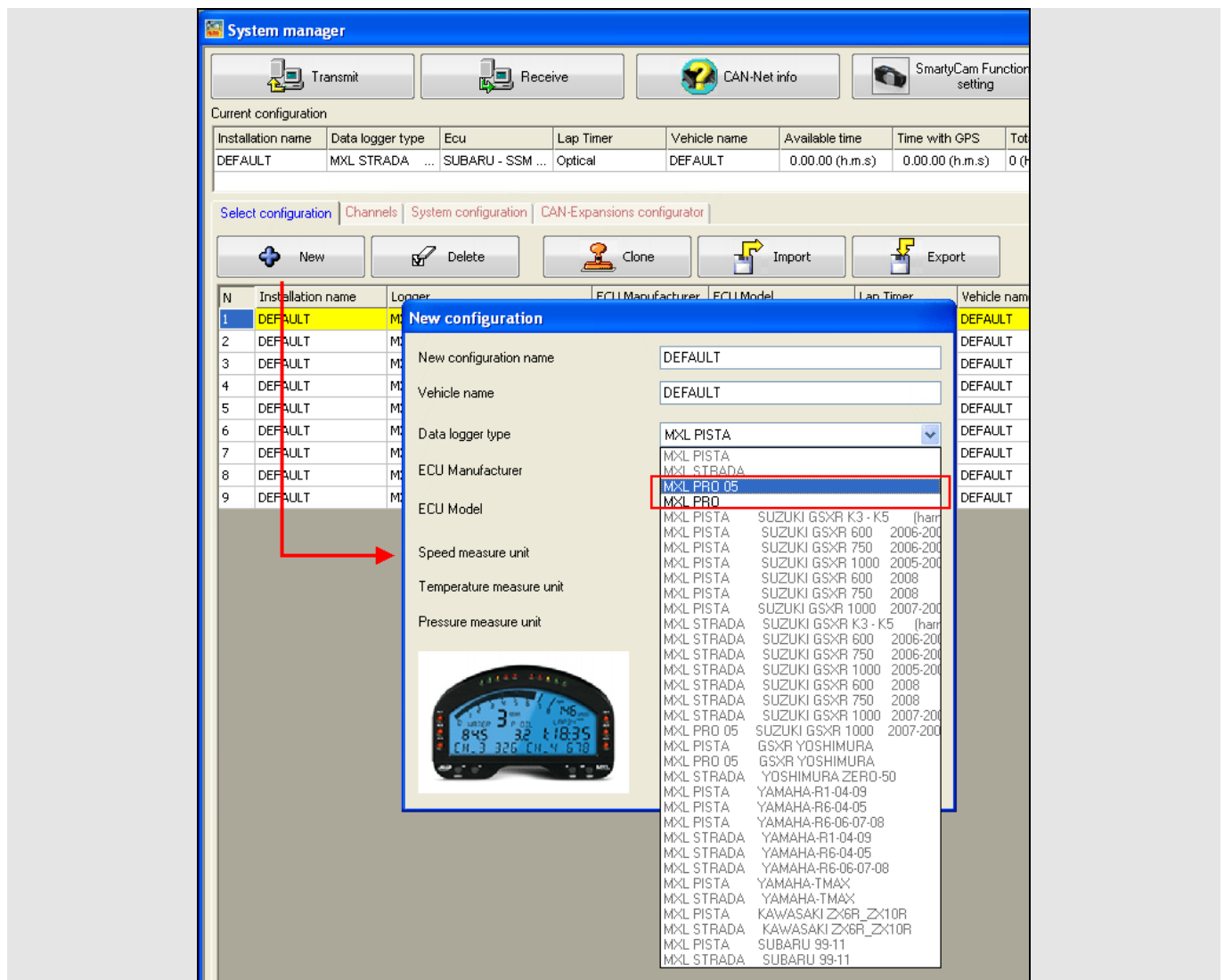
Please note: if you modified the pre-loaded configuration and want to come back just create a new configuration as explained before.

For any further information about MXL configuration management refer to MXL user manual freely downloadable from download area, documentation section of www.aim-sportline.com.

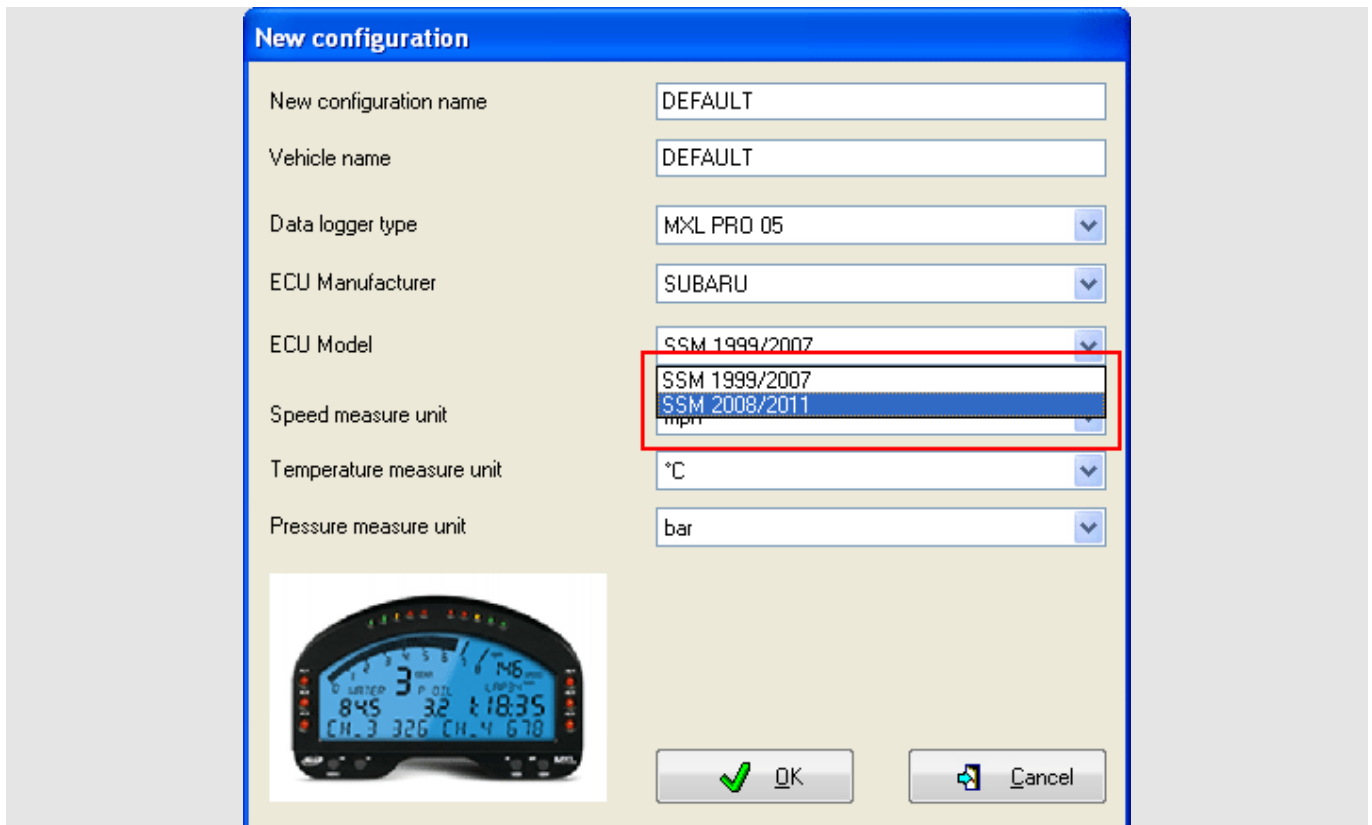
3.2 MXL Pro/Pro05 configuration

Run Race Studio 2 software and follow this path:

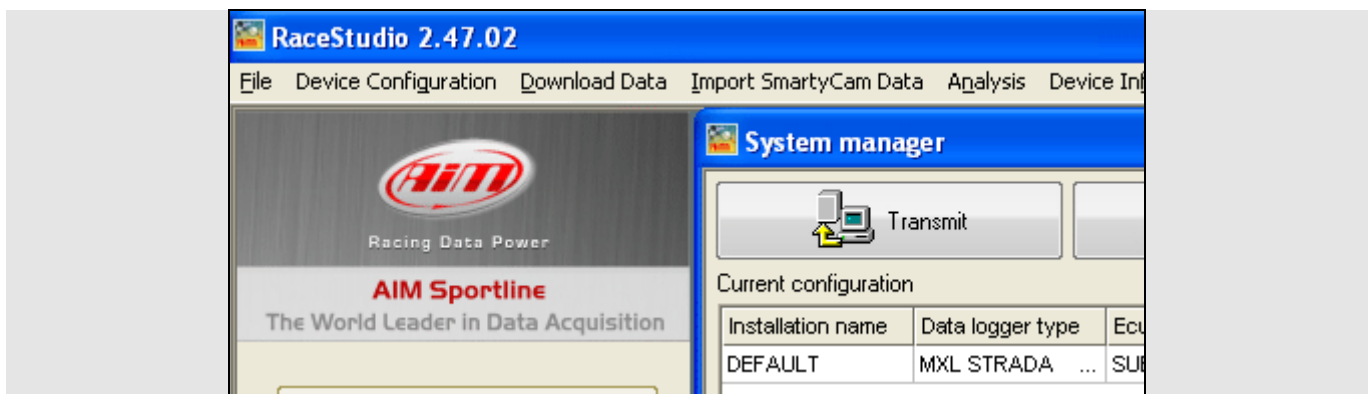
- press “Device configuration –> MXL” on the software left keyboard;
- MXL configuration page opens on “Select configuration” layer;
- press “New”: “New configuration panel”, shown here below, appears;
- fill in configuration and vehicle name;
- select data logger type choosing between: MXL Pro and MXL Pro05.



- select ECU Manufacturer "Subaru";
- select ECU Model corresponding to your vehicle as shown here below³;



- set speed, temperature and pressure measure units;
- press "OK" and the configuration has been created;
- press "Transmission" and the configuration is transmitted to MXL.



³If you have a Subaru Impreza registered in 2012 select "SSM 2008/2011".



Please note: Plug&Play kit comes with no additional sensors but analog channels and one of the four speeds are enabled by default. This can be verified activating "Channels" layer.

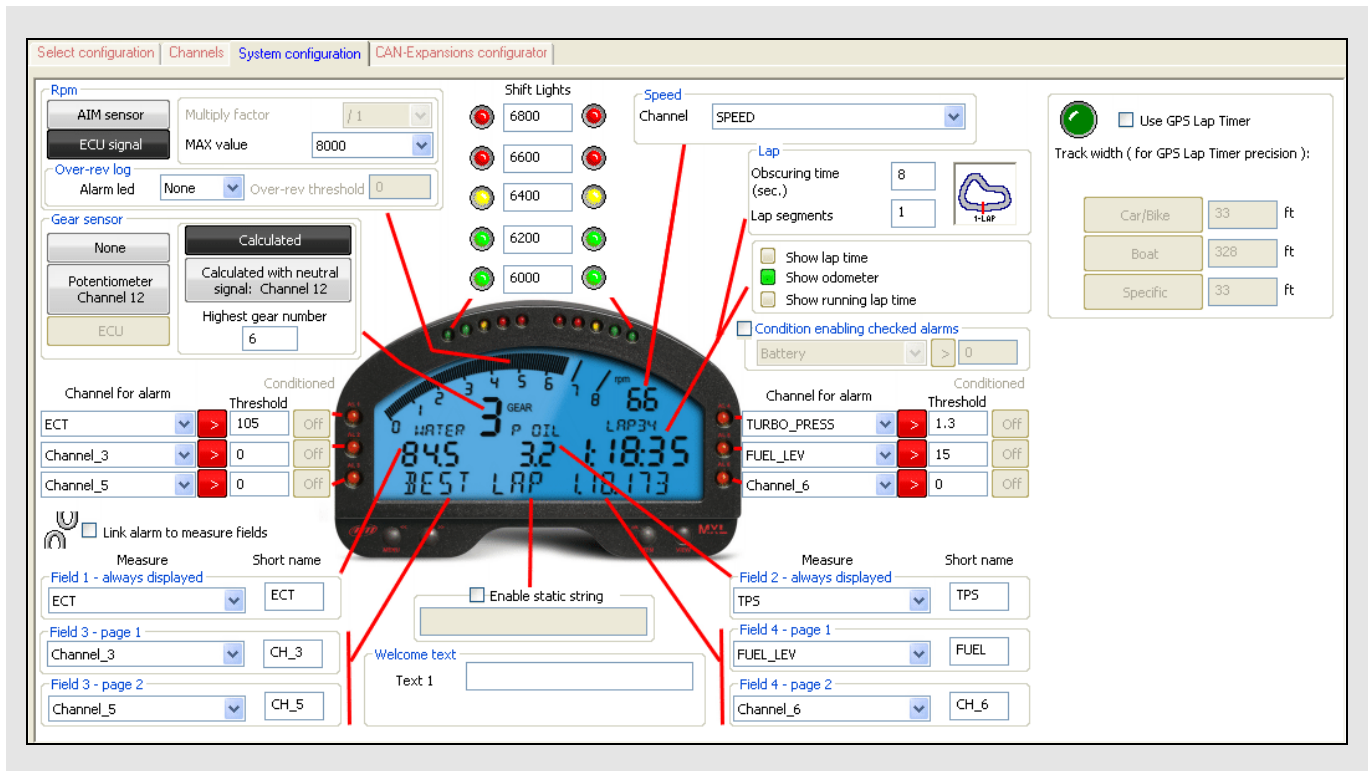
To enable the remaining three speeds and make the analog channels transmitting data you have to physically connect and configure the related sensors. This is beyond a Plug&Play philosophy.

The screenshot shows the 'System manager' software interface. At the top, there are buttons for 'Transmit', 'Receive', 'CAN-Net info', 'SmartyCam Functions setting', and 'Set acquisition syst...'. Below these is a 'Current configuration' table with columns: Installation name, Data logger type, Ecu, Lap Timer, Vehicle name, Available time, Time with GPS, Total frequency, and Master frequency. The 'Channels' tab is selected, showing four speed configuration panels (Speed_1 to Speed_4). Each panel has input fields for 'Wheel circumference' (set to 65.59 inch) and 'Pulses per wheel revolution' (set to 1). Below the speed panels is a table of channel configurations.

Channel iden...	Enabled/disabled	Channel name	Sampling frequ...	Sensor type	Measure unit	Low scale
RPM	<input type="checkbox"/> Disabled	Engine	10 Hz	Engine revolution speed	rpm	0
SPD_1	<input checked="" type="checkbox"/> Enabled	Speed_1	10 Hz	Speed	mph .1	0.0
SPD_2	<input type="checkbox"/> Disabled	Speed_2	10 Hz	Speed	mph .1	0.0
SPD_3	<input type="checkbox"/> Disabled	Speed_3	10 Hz	Speed	mph .1	0.0
SPD_4	<input type="checkbox"/> Disabled	Speed_4	10 Hz	Speed	mph .1	0.0
CH_1	<input checked="" type="checkbox"/> Enabled	Channel_1	10 Hz	Generic linear 0-5 V	V .1	0.0
CH_2	<input checked="" type="checkbox"/> Enabled	Channel_2	10 Hz	Generic linear 0-5 V	V .1	0.0
CH_3	<input checked="" type="checkbox"/> Enabled	Channel_3	10 Hz	Generic linear 0-5 V	V .1	0.0
CH_4	<input checked="" type="checkbox"/> Enabled	Channel_4	10 Hz	Generic linear 0-5 V	V .1	0.0
CH_5	<input checked="" type="checkbox"/> Enabled	Channel_5	10 Hz	Generic linear 0-5 V	V .1	0.0
CH_6	<input checked="" type="checkbox"/> Enabled	Channel_6	10 Hz	Generic linear 0-5 V	V .1	0.0
CH_7	<input checked="" type="checkbox"/> Enabled	Channel_7	10 Hz	Generic linear 0-5 V	V .1	0.0
CH_8	<input checked="" type="checkbox"/> Enabled	Channel_8	10 Hz	Generic linear 0-5 V	V .1	0.0
CH_9	<input checked="" type="checkbox"/> Enabled	Channel_9	10 Hz	Generic linear 0-5 V	V .1	0.0
CH_10	<input checked="" type="checkbox"/> Enabled	Channel_10	10 Hz	Generic linear 0-5 V	V .1	0.0
CH_11	<input checked="" type="checkbox"/> Enabled	Channel_11	10 Hz	Generic linear 0-5 V	V .1	0.0
CH_12	<input checked="" type="checkbox"/> Enabled	Channel_12	10 Hz	Generic linear 0-5 V	V .1	0.0



The MXL display you bought is to be configured: the image here below shows the values recommended by AIM.



Channels to set are:

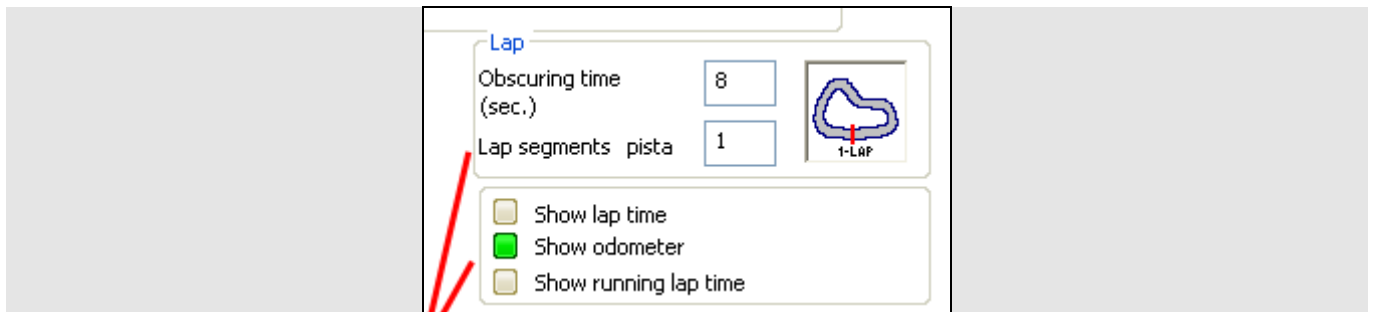
- RPM: set on ECU with Max value 8.000 RPM;
- Gear sensor: set on "Calculated"; it needs to be calibrated as explained in chapter 4;
- Shift lights: your vehicle has a speed limiter; set these values so that the shift lights switch on shortly before the limiter intervention. Here follow limiter value of some Subaru models.
 - STI spec C 2000 cc 280cv limiter is set on 7.900 RPM;
 - STI 2000 cc 265 cv limiter is set on 7.500 RPM.

Alarm thresholds set for these channels ("Channel for alarm") are:

- ECT (water temperature): threshold value at 105°C
- TURBO PRESS (over charging pressure): threshold fixed at 1.3 bar;
- FUEL_LEV (fuel level): threshold value set at 15% of the left fuel.

Channels visualized by MXL display (“Measure” fields) are:

- ECT (water temperature);
- TURBO PRESS (over charging pressure);
- TPS (throttle opening percentage)
- FUEL_LEV (fuel level);
- ODOMETER: when you are on track, if you have connected an optical receiver and placed the transmitter, when MXL detects a lap signal it switches to “Show lap time” mode as shown here below. To come back to odometer visualization switch off/on MXL.



Please note: for any further information about MXL configuration management refer to MXL user manual freely downloadable from download area, documentation section of www.aim-sportline.com.

4

Gear calibration

Gear calibration is the last step of MXL configuration. The procedure is as follows:

- press "MENU" on MXL keyboard until it shows "START GEAR CALIB";
- press "OK";
- it shows "PRESS OK TO CLEAR";
- press again "OK": the logger is ready to start calibration;
- leave, avoiding disengaging the clutch; you have to run an "apprentice lap": engage all gears and keep each gear engaged for some seconds;
- stop the car and switch it off but do not disengage the clutch or pull it;
- switch MXL on again: the display shows "CALIBRATION OK"; in case the procedure has been unsuccessful the display shows "ERROR GEAR CALC" and the device automatically re-starts the procedure: repeat the apprentice lap. It may occur that MXL shows "CALIBRATION OK" but stored values are incorrect. In this case repeat the calibration.

5

Sampled channels

Channels sampled by MXL depend on the car registration year and on the protocol selected when configuring MXL but not on MXL model.

Moreover buying a complete kit you can connect additional sensors and receive the related channels. These channels management is beyond a Plug&Play kit philosophy and you can find explanation of how to do this in MXL user manual, freely downloadable from download area, documentation section of www.aim-sportline.com.

5.1

Channels sampled by MXL with 1999-2007 protocol

ID	CHANNEL NAME	FUNCTION
ECU_1	RPM	RPM
ECU_2	SPEED	Vehicle Speed
ECU_3	TPS	Throttle Position sensor
ECU_4	ECT	Engine cooling temperature
ECU_5	TURBO_PRESS	Turbo pressure
ECU_6	IN_VVT_R	Right bank inlet timing
ECU_7	IN_VVT_L	Left bank inlet timing
ECU_8	IGN_ADV	Ignition advance
ECU_9	KNOCK_CORR	Advances correction depending on detonation sensor
ECU_10	FUEL_LEV	Fuel level
ECU_11	NEUTRAL	Neutral sensor
ECU_12	CLUTCH	Clutch disengaged signal
ECU_13	BRAKE	Brake switch
ECU_14	ENG_LOAD	Instant engine load
ECU_15	AIR_FLOW	Air flow in the air pipes



5.2

Channels sampled by MXL with 2008-2011 protocol

ID	CHANNEL NAME	FUNCTION
ECU_1	SSM_RPM	RPM
ECU_2	SSM_SPEED	Vehicle Speed
ECU_3	SSM_TPS	Throttle Position sensor
ECU_4	SSM_ECT	Engine cooling temperature
ECU_5	SSM_TURBO_PRES	Turbo pressure
ECU_6	SSM_IN_VVT_R	Right bank inlet timing
ECU_7	SSM_IN_VVT_L	Left bank inlet timing
ECU_8	SSM_IGN_ADV	Ignition advance
ECU_9	SSM_KNOCK_CORR	Advances correction depending on detonation sensor
ECU_10	SSM_FUEL_LEV	Fuel level
ECU_11	SSM_NEUTRAL	Neutral sensor
ECU_12	SSM_CLUTCH	Clutch disengaged signal
ECU_13	SSM_BRAKE	Brake switch
ECU_14	SSM_ENG_LOAD	Instant engine load
ECU_15	SSM_AIR_FLOW	Air flow in the air pipes
ECU_16	SSM_EX_VVT_R	Right bank exhaust timing
ECU_17	SSM_EX_VVT_L	Left bank exhaust timing
ECU_18	SSM_SEL_MAP	Selected Map
ECU_19	SSM_GEAR	Engaged gear



6

Data download

When a test session is finished, if you bought an MXL Pista/Pro/Pro05 you can download the recorded data on a PC using the proper cable that comes with the kit and save them using the database built in Race Studio 2.