

Race Studio Analysis

Creating KML files

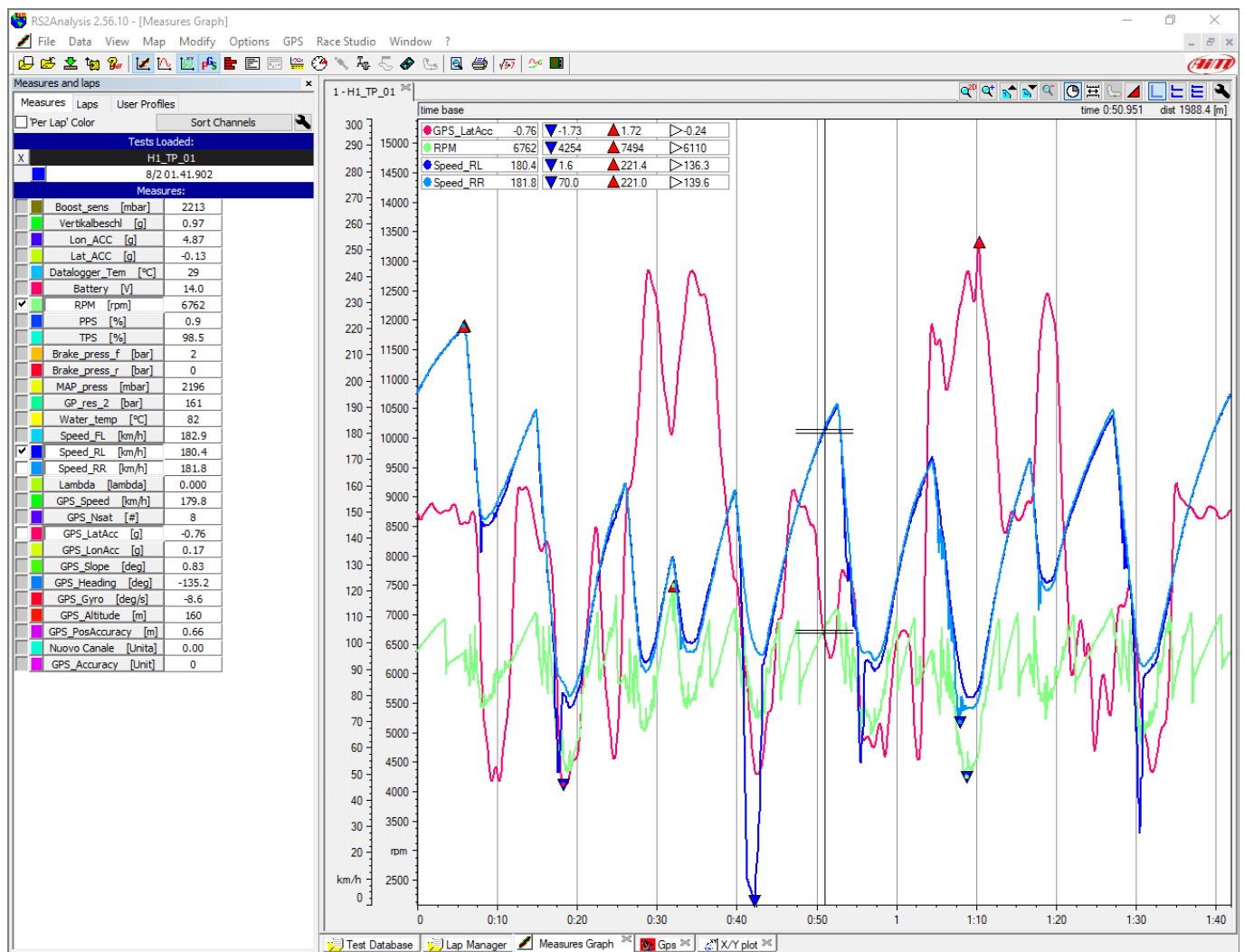
Question:

How can I visualize trajectories on Google Earth tracks images?

Answer:

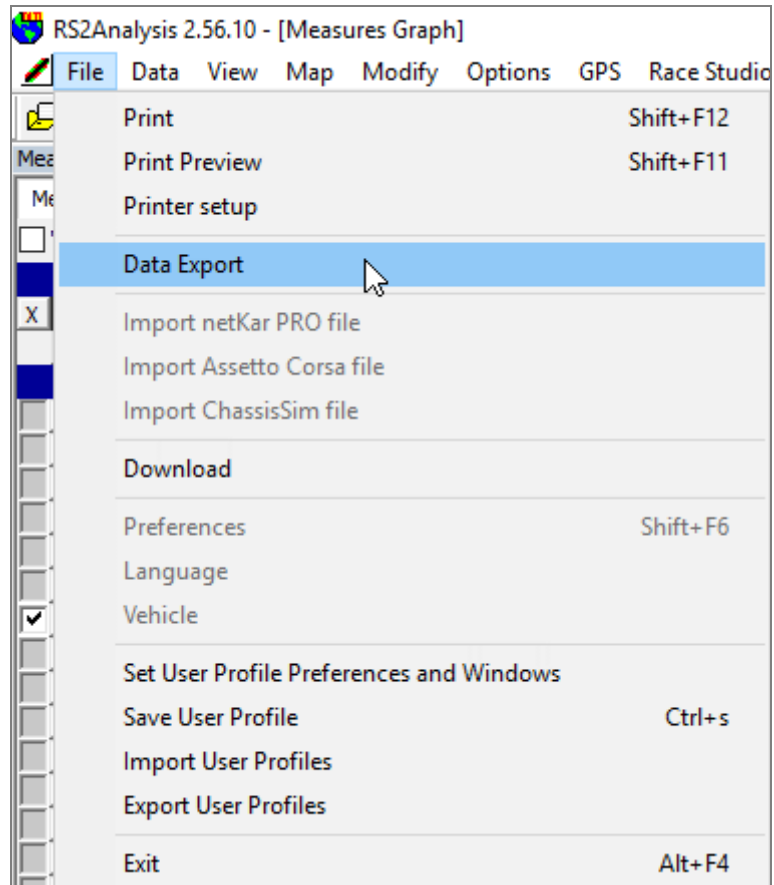
Trajectories can be visualized on Google Earth by generating a KML file. To create it:

- run RSA
- “Test database and Lap manager” window shows up
- open the test you run on the track want to export.



Race Studio Analysis

- Click "File" -> "Data Export"



Race Studio Analysis

- Data Export panel shows up
- press "Browse" to choose the KML file destination folder
select "Google Earth (KML)" compatibility to create a file that is compatible Google Earth
select one or more laps among these stored, to be used as reference lap (s)
- click "Save and Exit".

Destination file:
 Z:\Scratch\BkMatteo\test_analisi\H1_TP_01.kml

Compatibility

MicroSoft Excel
 Bosch LapSim (CSV)
 MoTeC (CSV)
 CSV
 TXT
 MatLab
 Google Earth (KML)

Channels:

Name	Unit	Acquis
Boost_sens	mbar	100 Hz
Vertikalbeschl	g	10 Hz
Lon_ACC	g	50 Hz
Lat_ACC	g	50 Hz
Datalogger_Tem	°C	10 Hz
Battery	V	1 Hz
RPM	rpm	50 Hz
PPS	%	50 Hz
TPS	%	50 Hz
Brake_press_f	bar	50 Hz
Brake_press_r	bar	50 Hz

Lap time:

Run/Lap	Time
1/ 1	04.19.297
2/ 1	02.26.046
2/ 2	01.10.098
3/ 1	00.32.009
3/ 2	01.45.997
3/ 3	02.38.690
4/ 1	02.16.790
4/ 2	00.45.026
5/ 1	00.52.045
5/ 2	00.42.359

Frequency: Save at 10 Hz

Select at least one lap.

Race Studio Analysis

- Close RSA
- open the folder where KML file has been created
- double click on the file and wait for Google Earth to open the file.

